

TiproTM-ONE P

To be used:

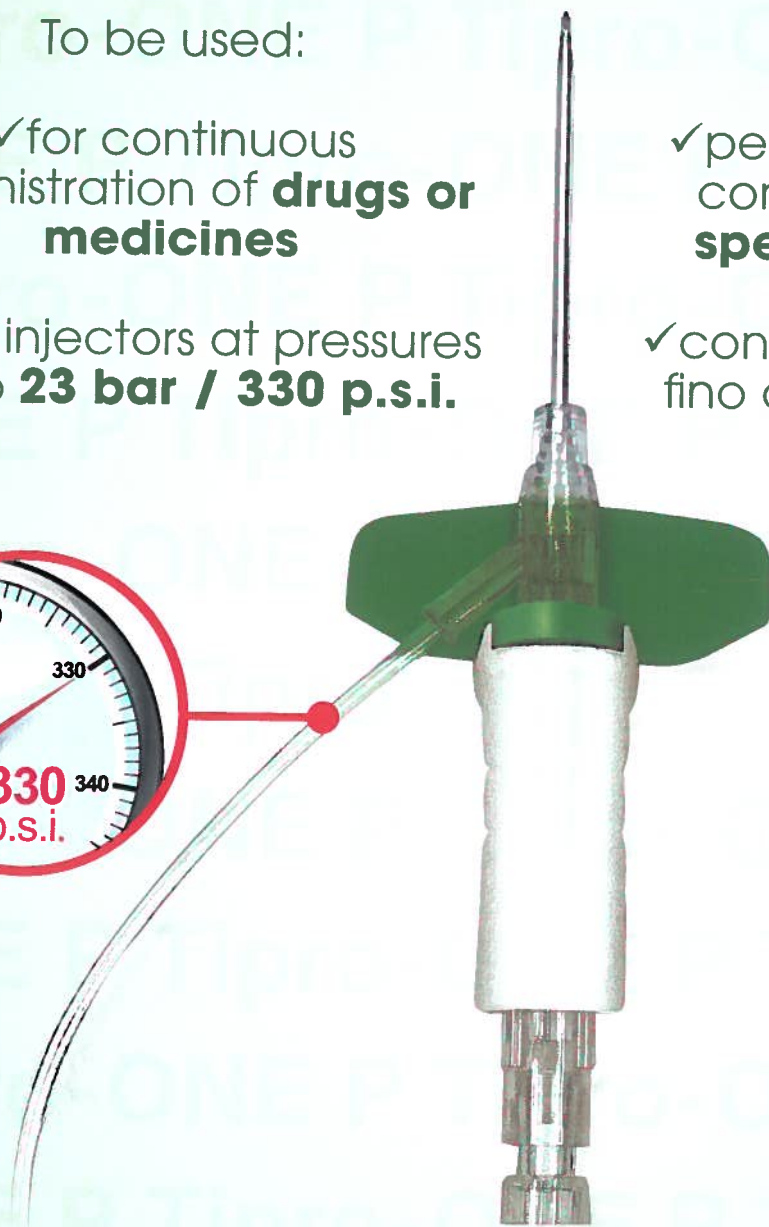
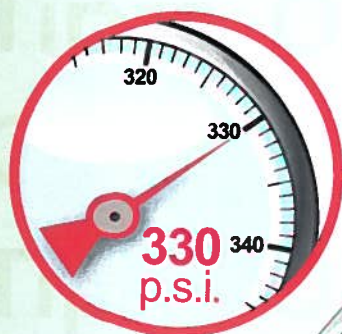
✓ for continuous administration of **drugs or medicines**

✓ with injectors at pressures up to **23 bar / 330 p.s.i.**

Da utilizzare:


✓ per la somministrazione continua di **farmaci o specialità medicinali**


✓ con iniettori con pressioni fino a **23 bar / 330 p.s.i.**



Closed system safety peripheral IV catheter for continuous administration of fluids, solutions and drugs via injectors, pumps and gravity-feed


Catetere venoso periferico di sicurezza con sistema chiuso per la somministrazione continua di soluzioni, fluidi e farmaci mediante iniettori, pompe e a gravità


 Catetere Integrato con raccordo mono via con tappo L/Lock
Catetere Integrato con raccordo mono via, con rubinetto a tre vie e valvola needle less (senza ago)

 Integrated catheter with one way connection
Integrated catheter with one way connection and with three ways stopcock and needle less valve

REF	Description	Gauge	Catheter O.D. (mm)	Catheter lenght (mm)	Flow (ml/min)	Box (pcs)	Carton (pcs)
31145101	One way connection*	26	0,64	19	15	25	100
31145501	One way connection with stopcock and valve*	26	0,64	19	15	20	80
31230101	One way connection	24	0,74	19	24	25	100
31230501	One way connection with stopcock and valve	24	0,74	19	24	20	80
31343101	One way connection	22	0,90	19	37	25	100
31343501	One way connection with stopcock and valve	22	0,90	19	37	20	80
31330101	One way connection	22	0,90	25	31	25	100
31330501	One way connection with stopcock and valve	22	0,90	25	31	20	80
31443101	One way connection	20	1,00	25	47	25	100
31443501	One way connection with stopcock and valve	20	1,00	25	47	20	80
31430101	One way connection	20	1,00	32	42	25	100
31430501	One way connection with stopcock and valve	20	1,00	32	42	20	80
31433101	One way connection	20	1,00	45	38	25	100
31433501	One way connection with stopcock and valve	20	1,00	45	38	20	80
31543101	One way connection	18	1,30	25	65	25	100
31543501	One way connection with stopcock and valve	18	1,30	25	65	20	80
31530101	One way connection	18	1,30	32	63	25	100
31530501	One way connection with stopcock and valve	18	1,30	32	63	20	80
31533101	One way connection	18	1,30	45	58	25	100
31533501	One way connection with stopcock and valve	18	1,30	45	58	20	80
31730101	One way connection	16	1,75	32	125	25	100
31730501	One way connection with stopcock and valve	16	1,75	32	125	20	80

*Non utilizzare il catetere G26 per le alte pressioni - Do not use 26G catheter for high pressure.

 Catetere Integrato con raccordo a Y con tappi L/Lock
Catetere Integrato con raccordo a Y con valvola needle less (senza ago)

 Integrated catheter with Y connection.
Integrated catheter with Y connection and with needle less valve

REF	Description	Gauge	Catheter O.D. (mm)	Catheter lenght (mm)	Flow (ml/min)	Box (pcs)	Carton (pcs)
31190101	Y connection*	26	0,64	19	15	25	100
31190501	Y connection with valve*	26	0,64	19	15	25	100
31282101	Y connection	24	0,74	19	24	25	100
31282501	Y connection with valve	24	0,74	19	24	25	100
31395101	Y connection	22	0,90	19	37	25	100
31395501	Y connection with valve	22	0,90	19	37	25	100
31382101	Y connection	22	0,90	25	31	25	100
31382501	Y connection with valve	22	0,90	25	31	25	100
31495101	Y connection	20	1,00	25	47	25	100
31495501	Y connection with valve	20	1,00	25	47	25	100
31482101	Y connection	20	1,00	32	42	25	100
31482501	Y connection with valve	20	1,00	32	42	25	100
31485101	Y connection	20	1,00	45	38	25	100
31485501	Y connection with valve	20	1,00	45	38	25	100
31595101	Y connection	18	1,30	25	65	25	100
31595501	Y connection with valve	18	1,30	25	65	25	100
31582101	Y connection	18	1,30	32	63	25	100
31582501	Y connection with valve	18	1,30	32	63	25	100
31585101	Y connection	18	1,30	45	58	25	100
31585501	Y connection with valve	18	1,30	45	58	25	100
31782101	Y connection	16	1,75	32	125	25	100
31782501	Y connection with valve	16	1,75	32	125	25	100

*Non utilizzare il catetere G26 per le alte pressioni - Do not use 26G catheter for high pressure

CE 0476

Tipromed s.r.l.

Via E.G. Segrè, 6

42041 Sorbolo Levante - Brescello (RE) - Italy

Tel. +39 (0)522 480043 - Fax +39 (0)522 480161

E-mail: info@tipromed.it - Internet: www.tipromed.it